



Marlene Opperman
083 680 0173
marlene@csisales.co.za

Contact Head Office

011 805 6316

Third Floor Office Block F
Hertford Office Park
90 Bekker Rd
Vorna Valley
Midrand

On Show

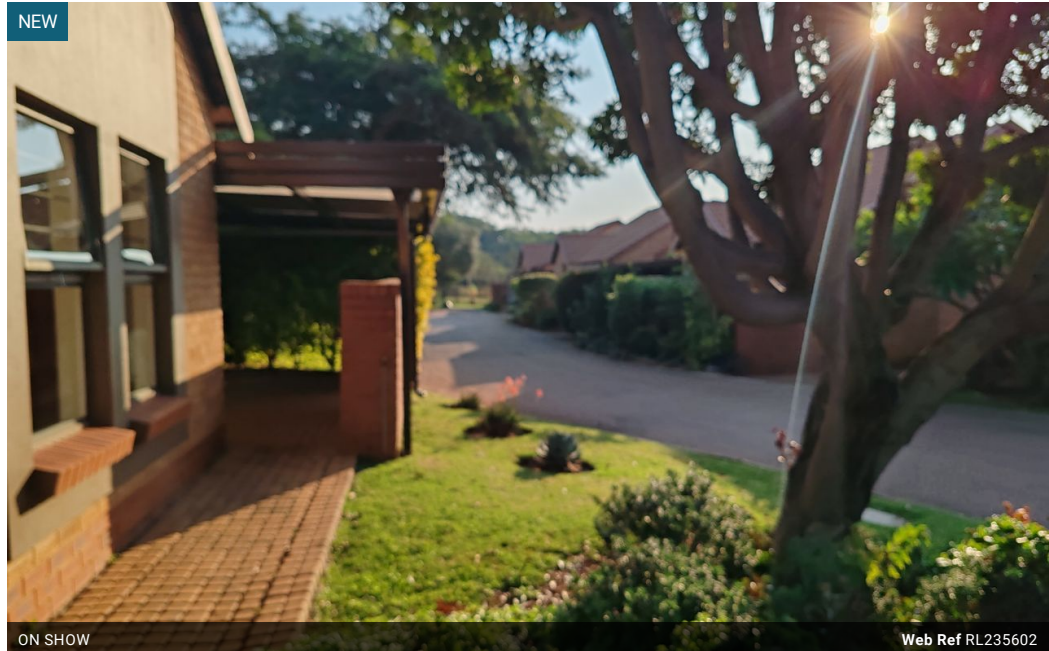
9:00 to 12:00

Saturday, 17 May 2025

Directions

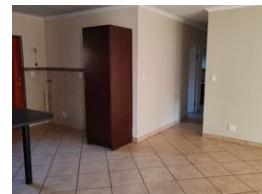
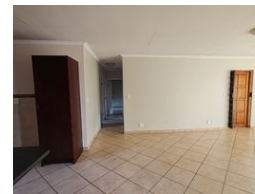
1733 Erememola Ave Montana Gardens

3 Bedroom House For Sale in Montana Tuine



ON SHOW

Web Ref RL235602



R2,050,000

Monthly Bond Repayment R21,159.86

Calculated over 20 years at 11% with no deposit.

Transfer Costs R80,947.00 **Bond Costs** R34,625.00

These calculations are only a guide. Please ask your conveyancer for exact calculations.

Monthly Levy R3,480 **Monthly Rates** R950

3 2 2

3 Bedroom Home Retirement Village

This small corner unit 3 bedroom, 2 bathroom home is situated in the very popular TweeRiviere retirement close to the Service Centre

Easy open plan living with loads of packing space and modern finish kitchen.

Two bathrooms with wheelchair friendly shower, the en-suite bathroom with a bath.
Double Garage

Large private patio .

Embrace a worry-free retirement with a host of additional benefits and facilities:

Enhanced Security: Enjoy complete peace of mind with the village's comprehensive security measures.

Medical Services: Benefit from the clinic on site with access to doctor, physio therapist, various home-based care or the...

Features

Pets Allowed Yes

Interior

Bedrooms	3
Bathrooms	2
Kitchens	1
Recep. Rooms	2
Furnished	No

Exterior

Garages	2
Carports / Parkings	2
Security	Yes
Pool	No
Views	False

Sizes

Floor Size	130m ²
------------	-------------------

Extras

Breakfast Nook Built in Wardrobes Courtyard Covered Patio Double Parking Dishwasher
Connection Electric Garage Fibre Medical Care Open Plan Room Open Plan Kitchen Retirement
Living Under Counter Oven

