



Marlene Opperman
083 680 0173
marlene@csisales.co.za

Contact Head Office

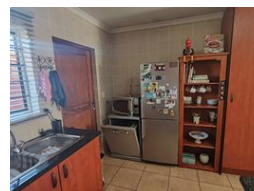
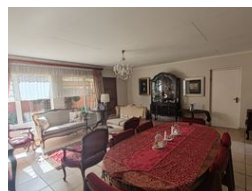
011 805 6316

Third Floor Office Block F
Hertford Office Park
90 Bekker Rd
Vorna Valley
Midrand

3 Bedroom House For Sale in Montana Tuine



Web Ref RL236032



R2,200,000



3



2



1.5

Monthly Bond Repayment R22,335.04

Calculated over 20 years at 10.75% with no deposit.

Transfer Costs R89,947.00

Bond Costs R34,625.00

These calculations are only a guide. Please ask your conveyancer for exact calculations.

Monthly Levy R3,800

Monthly Rates R900

Stunning 3 Bedroom Retirement Home For Sale

Discover the ultimate retirement lifestyle in this stunning bedroom home, perfectly situated in the sought-after Tweeriviere Retirement Village.

Prime Location - Close to Wildlife Reserve

Enjoy easy access to major roads and amenities, including shopping centres, medical care, and more.

Premium Features

- Open-plan living with ample cupboard space, air-conditioning unit and skylight
- Spacious living/dining room opening onto a double patio with well maintained private garden
- 3 Luxurious bedrooms with full-length built-in wardrobes. Main bedroom en-suite bathroom with bath.
- very spacious 2nd bedroom or TV room with skylight and air-conditioning unit
- 1 bathroom with walk-in/wheelchair-friendly shower
- Single garage (but double garage space) with double carport
- 8Kva Solar System

Secure and Supportive Community

Features

Pets Allowed		Yes			
Interior				Sizes	
Bedrooms	3	Garages	1.5	Floor Size	134m²
Bathrooms	2	Carports / Parkings	2		
Kitchens	1	Security	Yes		
Recep. Rooms	2	Pool	No		
Furnished	No	Views	False		

Extras

Air Conditioner Built in Wardrobes Carport Courtyard Covered Patio Electric Garage En Suite
Fibre Garden Garden Services Immaculate Condition Water Included

