



Ruan Erasmus
071 481 6199
ruan@csisales.co.za

Contact Head Office

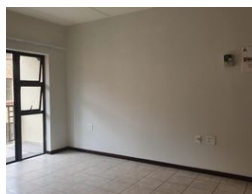
011 8056316

Third Floor Office Block F
Hertford Office Park
90 Bekker Rd
Vorna Valley
Midrand

2 Bedroom Apartment For Sale in Olivedale



Web Ref RL236408



R849,000

2 1

Monthly Bond Repayment R8,619.29

Calculated over 20 years at 10.75% with no deposit.

Transfer Costs R28,244.00 **Bond Costs** R21,450.00

These calculations are only a guide. Please ask your conveyancer for exact calculations.

Monthly Levy R2,900 **Monthly Rates** R600

2 bedroom apartment - Olivedale retirement village

2 bedrooms / 1 bathroom / Undercover carport / Balcony / Easy access to the facilities / Excellent condition /

The service centre boasts a broad range of services and amenities.

These include:

Hair salon
Beauty salon
Library
Community hall(Dance classes, Exercise classes, Pilates, Guest artists performing, Market days, Games and many other activities
)
Restaurant
Pool
Kiosk
Bus service
Cleaning service
Laundry service
Doctors rooms

Features

Interior

Bedrooms	2
Bathrooms	1
Kitchens	1
Recep. Rooms	2
Furnished	No

Exterior

Carports / Parkings	1
Security	Yes
Pool	Yes
Views	False

Sizes

Floor Size	50m²
------------	------

