



**Ruan Erasmus**  
071 481 6199  
ruan@csisales.co.za

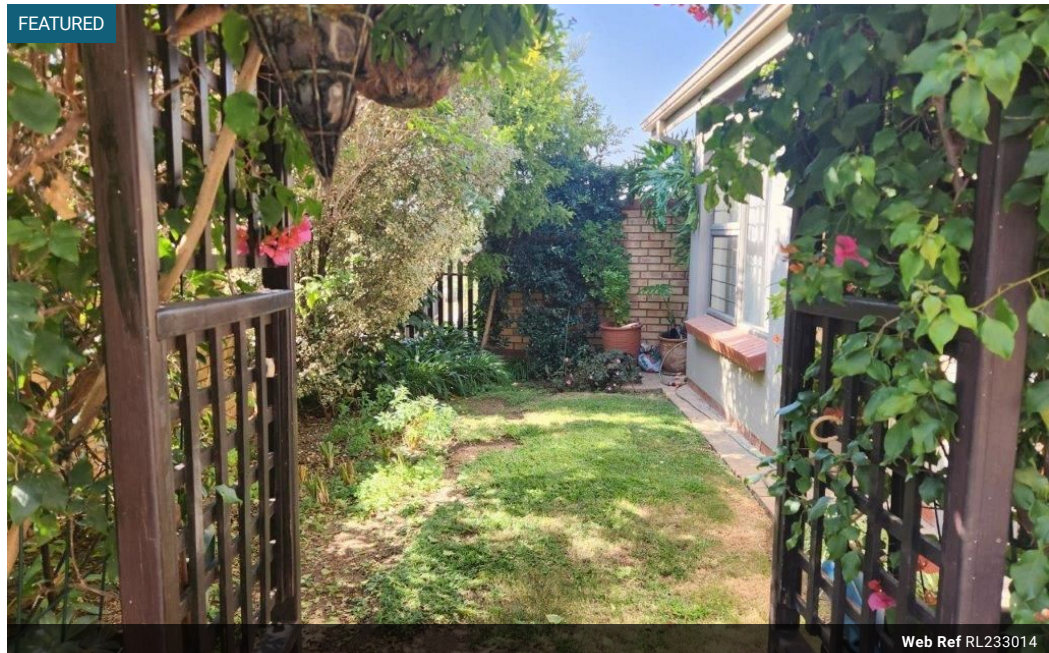
Contact Head Office

011 8056316

Third Floor Office Block F  
Hertford Office Park  
90 Bekker Rd  
Vorna Valley  
Midrand

## 2 Bedroom Simplex For Sale in Olivedale

FEATURED



Web Ref RL233014



**R1,395,000**

2 1 1

**Monthly Bond Repayment** R14,162.44

Calculated over 20 years at 10.75% with no deposit.

**Transfer Costs** R40,467.00 **Bond Costs** R27,105.00

These calculations are only a guide. Please ask your conveyancer for exact calculations.

**Monthly Levy** R3,700 **Monthly Rates** R900

### 2 Bedroom Simplex - Olivedale retirement village

2 bedrooms / 1 full bathroom / Single garage / Patio / Great condition /

The service centre boasts a broad range of services and amenities.

These include:

Hair salon  
Beauty salon  
Library  
Community hall( Dance classes, exercise classes, yoga, guest artists performing, market days, clothing markets, games and many other activities ))  
Restaurant  
Pool  
Kiosk  
Bus service  
Cleaning service  
Laundry service  
Doctors rooms

### Features

Pets Allowed		Yes	
Interior			
Bedrooms	2		
Bathrooms	1		
Kitchens	1		
Recep. Rooms	2		
Furnished	No		
Exterior			
Garages	1		
Carports / Parkings	1		
Security	Yes		
Pool	Yes		
Views	False		
Sizes			
Floor Size	115m²		

