



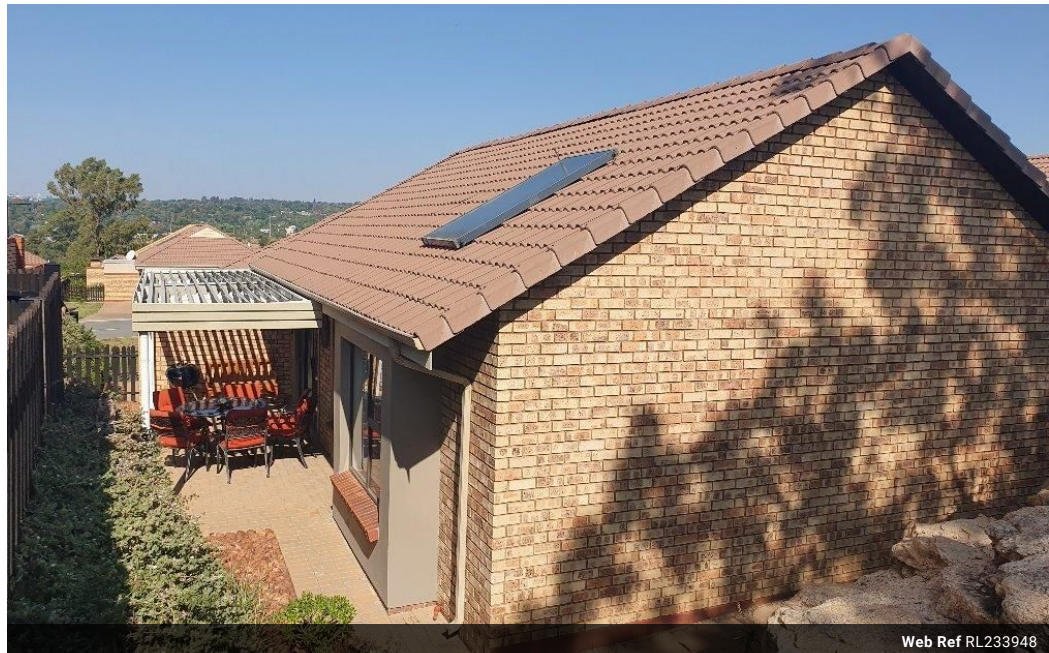
Ruan Erasmus
071 481 6199
ruan@csisales.co.za

Contact Head Office

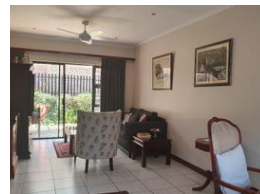
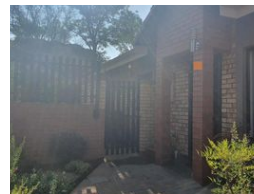
011 8056316

Third Floor Office Block F
Hertford Office Park
90 Bekker Rd
Vorna Valley
Midrand

2 Bedroom Simplex For Sale in Olivedale



Web Ref RL233948



R1,490,000

2 1 1

Monthly Bond Repayment R15,126.91

Calculated over 20 years at 10.75% with no deposit.

Transfer Costs R45,485.00 **Bond Costs** R28,990.00

These calculations are only a guide. Please ask your conveyancer for exact calculations.

Monthly Levy R3,900 **Monthly Rates** R900

2 Bedroom Simplex - Olivedale retirement village

2 bedrooms / 1 full bathroom / Single garage / Triple patio / Excellent condition /

The service centre boasts a broad range of services and amenities.

These include:

Hair salon
Beauty salon
Library
Community hall(Dance classes, exercise classes, yoga, market days, clothing markets, games and many other activities))
Restaurant
Pool
Kiosk
Bus service
Cleaning service
Doctors rooms
Frail care
Home based care

Features

Pets Allowed		Yes			
Interior				Sizes	
Bedrooms	2			Floor Size	91m²
Bathrooms	1				
Kitchens	1				
Recep. Rooms	2				
Furnished	No				
Exterior					
Garages	1				
Carports / Parkings	1				
Security	Yes				
Pool	Yes				
Views	False				

