



**Rhulani Baloyi**  
071 611 5098  
rhulani@csirentals.co.za



**Boitumelo Dikgole**  
0673156600

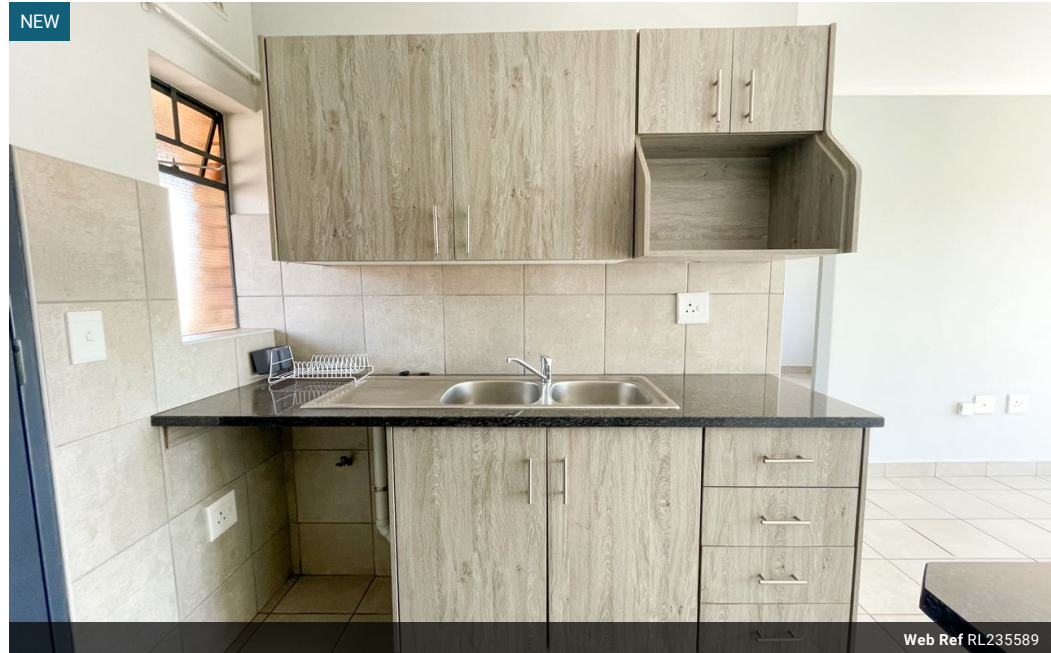
boitumelo@csiproperties.co.za

Contact Head Office

011 805 6316

Third Floor Office Block F  
Hertford Office Park  
90 Bekker Rd  
Vorna Valley  
Midrand

## 2 Bedroom Apartment To Let in Montana



Web Ref RL235589



R6,600 pm

**Lease Period** 12 months  
**Annual Escalation** -

**Availability** Immediately

**Deposit** R6,600

2 1

Apartment in a safe place

Do not miss the opportunity to stay in this brand new upmarket estate! This estate is perfectly located in Montana Gardens x53 with easy access to the R513 on ramp and a short distance from a variety of shopping centres and businesses, such as the Kolonnade Shopping Centre. This beautiful estate boasts a variety of lifestyle and security features! Special care was taken by the developer with regards to security: 24H manned access control with bio-metric readers, CCTV, electric fence, roaming guards and lots more! You will also enjoy, pre-paid water & electricity, solar geysers, landscaped gardens and a well-managed estate when you make Oxford Heights Montan your home! Visit us today!

### Features

#### Interior

Bedrooms	2
Bathrooms	1
Kitchens	1
Recep. Rooms	1
Furnished	No

#### Exterior

Carports / Parkings	1
Security	Yes
Pool	Yes
Views	True

#### Sizes

Floor Size	51m <sup>2</sup>
------------	------------------

#### Extras

24 Hour Access 24 Hour Response Carport Closed Circuit TV Complex Estate Fenced Pool Fibre Granite Tops Lapa Electric Fencing Guard House Near Bus Service Communal Braai Area Landscaped Open Plan Kitchen Near Mini Bus Service Safe Satellite Dish Secure Parking Laundry Security Complex Open Plan

