



Anita Meyer  
063 019 4712  
anita@csiproperties.co.za

Contact Head Office

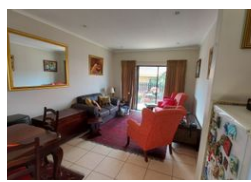
011 8056316

Third Floor Office Block F  
Hertford Office Park  
90 Bekker Rd  
Vorna Valley  
Midrand

## 2 Bedroom House Rented in Olivedale



Web Ref RL24117



R11,750 pm

Lease Period 12 months  
Annual Escalation -

Availability Immediately Deposit -

2 1 1

OLIVEDALE RETIREMENT VILLAGE!!! OVER THE AGE OF 50?? CALL NOW!!!

OLIVEDALE RETIREMENT VILLAGE!!! OVER THE AGE OF 50?? CALL NOW!!!

Available from the 1st of December or before is this stunning 2-bedroom cottage. The cottage comes with a full kitchen, lounge, spacious patio and garage. There is a spacious bathroom which includes a shower and shower seat along with a bath.

Village Features:

- Elevators in all apartment Blocks
- 24 Hour Security and Access Control
- Dining room with fully-equipped industrial kitchen open daily
- Hair & Beauty salon
- Laundry Service
- Transport Service
- Fully equipped frail care facility.

Unit Features:

- Water included in the monthly rental
- Pre-paid Electricity
- Intercom with Pre-paid telephone option

### Features

<b>Pets Allowed</b>	Yes		
<b>Interior</b>		<b>Exterior</b>	
Bedrooms	2	Garages	1
Bathrooms	1	Security	Yes
Kitchens	1	Pool	No
Recep. Rooms	2		
Furnished	No		

